

ATONIC HEAD DROPS: A NEW SEIZURE MIMIC

Dr Lokesh Saini ^{#1}, Ashna Kumar ^{*1}, Dr Monika Chhajed², Dr Kuldeep Singh¹

[#]-Corresponding Author ^{*}- Presenting Author
¹All India Institute of Medical Sciences, Jodhpur, Rajasthan: ²Chaitanya Hospital, Chandigarh

Introduction

- The **distinction** between epileptic and non-epileptic events poses a great challenge to the treating clinician.
- One amongst these non- epileptic events is the **atonic head drop in early infancy** that is easily confused and wrongly misdiagnosed as epileptic spasms.
- With **very limited literature** regarding this entity, we aim to describe a case-series of three infants with sudden repeated episodes of head drops.

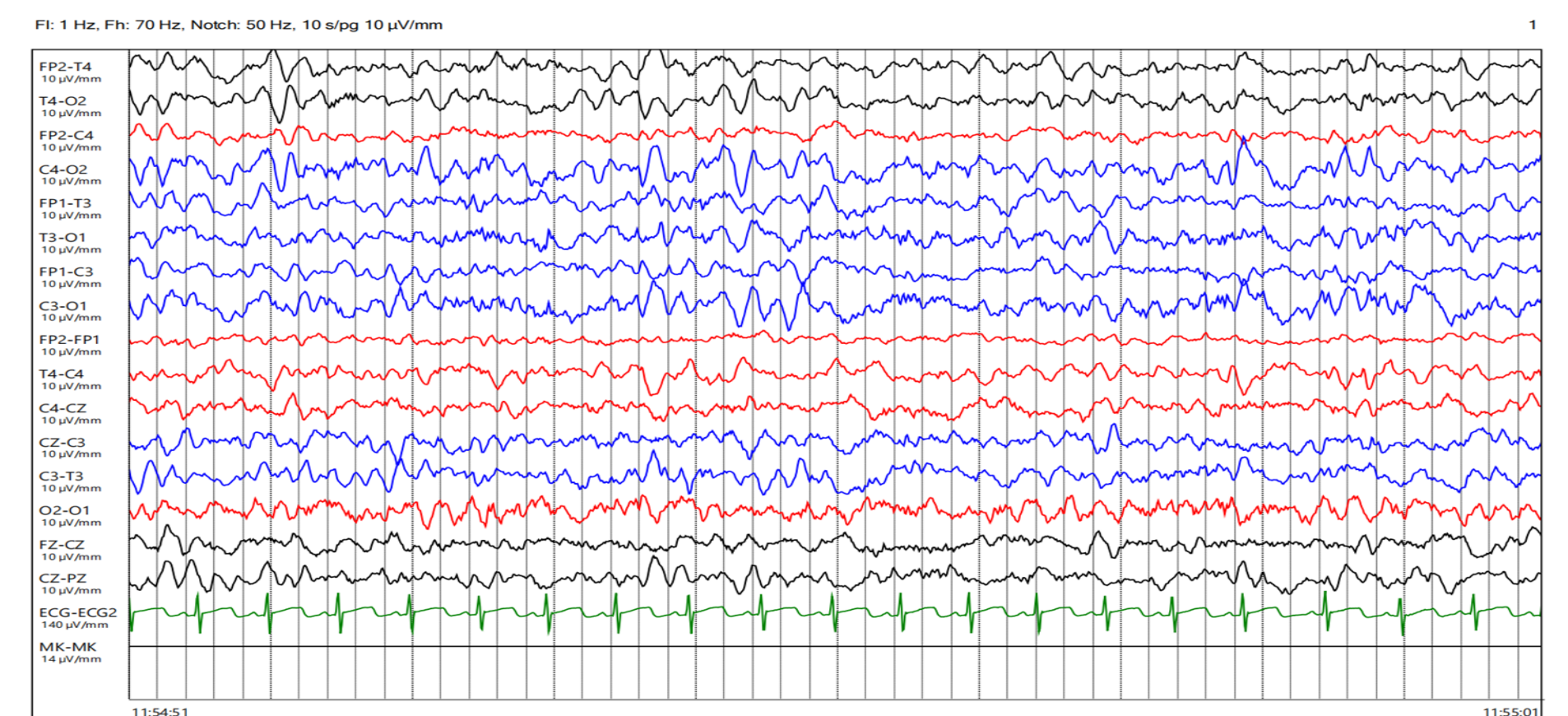
Materials and Methods

We describe the case series of three infants who presented to OPD with the complaints of sudden head drops.

Results		Sex	Age at onset	Frequency	Development	Age at remission
	Case 1 (Video 1)	Male	5months	20-25/day	Normal	14months
	Case 2 (Video 2)	Male	7months	15-20/day	Normal	12months
	Case 3 (Video 3)	Female	6months	15-20/day	Normal	9months

Results

- ❑ Three unrelated cases presented to us with similar **episodes of sudden head drops** with onset in last 1month. However, none of them had any risk factor for seizures.
- ❑ They all had **smooth perinatal history with normal development** and non-significant family history. There was no faltering of development.
- ❑ All initially had multiple episodes per day which later reduced without any therapeutic intervention.
- ❑ The **electroencephalography revealed normal** records with no ictal correlate of the head drops. On follow up, all showed spontaneous remission.



Normal EEG record

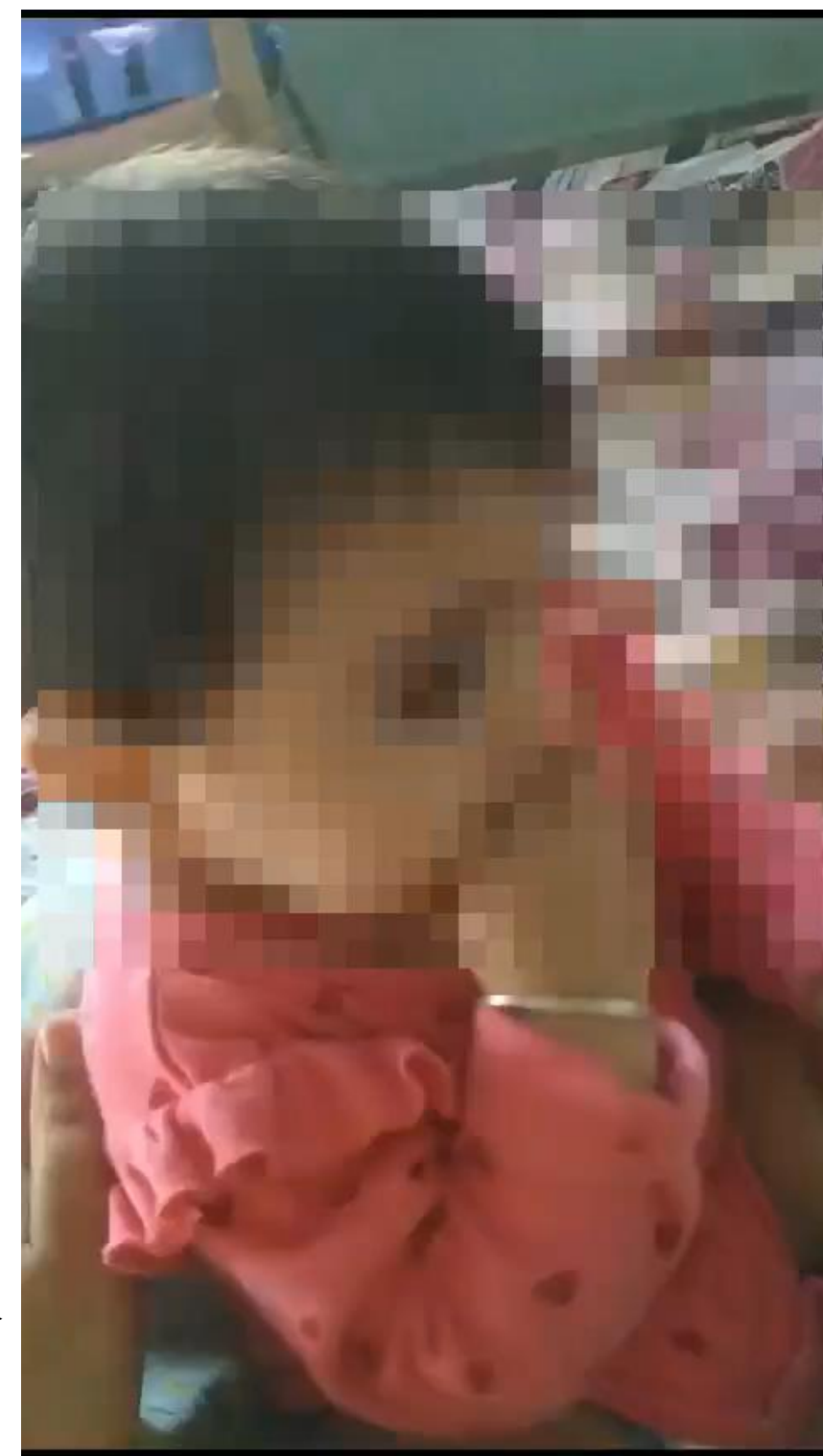
Case 1 →



↑
Case 2



Case →



Conclusion

- ❖ **Atonic head drops** is a **benign** entity that closely resembles the severe west syndrome.
- ❖ These episodes usually have an onset in the **2nd half of infancy**.
- ❖ These clustered appearing events however, don't cause any developmental delay and have an **excellent outcome**.
- ❖ Their recognition is important so as to **prognosticate** the parents regarding its self-limited course with normal development and at the same time to prevent expensive and exorbitant expenditure associated with costly and complex investigations to look for the etiology of these episodes.

References

Capovilla G, Montagnini A, Peruzzi C, Beccaria F. Head atonic attacks: a new type of benign non-epileptic attack in infancy strongly mimicking epilepsy. Epileptic Disord. 2013 Mar;15(1):44-8. doi: 10.1684/epd.2013.0548. PMID: 23531441.

